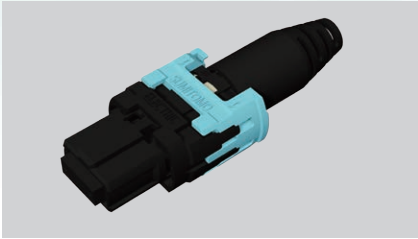


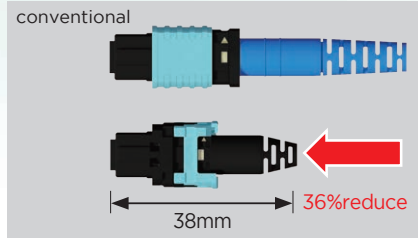
Optical Connectors

MPO cabling solution

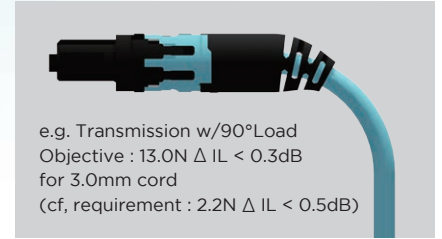
FlexMPO™ Housing for Round cord (dia. 3.0mm. dia.3.8mm)



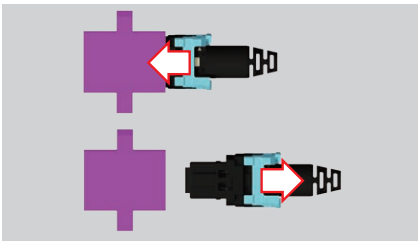
Easy to Use & Ultra compact



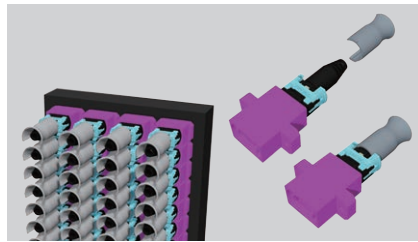
World Top Class, Super Short



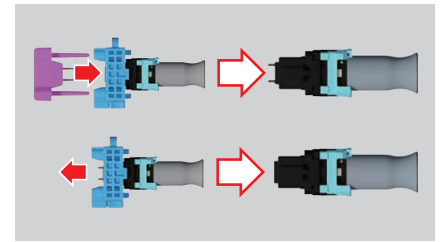
Telcordia GR1435 Objective spec. compliant



Push-Pull with outer housing (Like SC connection)



Push-Pull and compact Tab (Can set after mounting)



Can change gender w/o disassembly
Can change polarity(w/ disassembly)

MPO Connector

Features

- Easy to attach/detach by a push-on action
- Enables high-density connection of many fibers as a unit

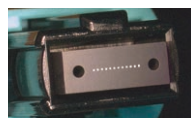


Ribbon cord Ribbon

Connector	MPO (1 row type)			
Fiber Type	SM		MM62.5,MM50,MM50 (10G)	
Media Type	Bare Ribbon, 3mm Round Cord, Jacketted Ribbon Cord			
Fiber Count	8,12		12	
Polish	APC		Flat PC	
Insertion Loss*	Std.Loss	Low Loss	Std.Loss	Low Loss
	0.75dB	0.35dB	0.75dB	0.35dB
Typical**	0.2dB	0.1dB	0.15dB	0.08dB
	Return Loss*			≥ 55dB

MPO (1 row type)

- With 12-fiber ribbons arranged on ferrule



MPO (1 row type)

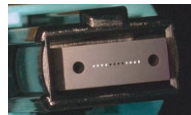
Connector	MPO (2 row type)			
Fiber Type	SM		MM62.5,MM50,MM50 (10G)	
Media Type	Bare Ribbon, 3.8mm Round Cord, Jacketted Ribbon Cord			
Fiber Count	24			
Polish	APC		Flat PC	
Insertion Loss*	Std.Loss	Low Loss	Std.Loss	Low Loss
	0.75dB	0.35dB	0.75dB	0.35dB
Typical**	0.2dB	0.15dB	0.2dB	0.15dB
	Return Loss*			≥ 55dB

*: Values against master plug

**: Reference Values

Q8MPO

- Only both side 4 fibers are embedded in the connector. Suitable for QSFP+ module connection.



MPO (2 row type)

MPO (2 row type)

Features

- With two 12-fiber ribbons arranged in parallel on a ferrule, 24 fibers are connected as a unit.
- Most suitable for high-density fiber connection



MPO (2 row type)

Connector	Common				
Housing Color	SM.Std Loss Green	SM.Low Loss Yellow	MM62.5 Beige	MM50 Black	MM50(10G) Aqua
Interface	IEC 61754-7				

*: At the time of order, specify whether or not the guide pin is necessary.



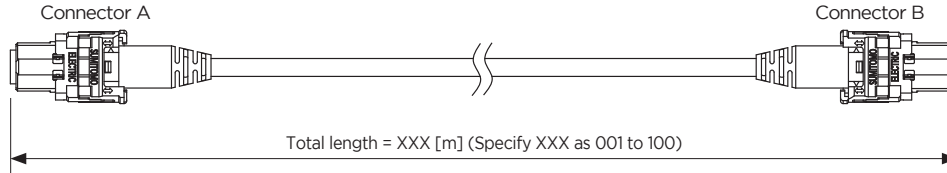
New MPO was awarded a elite score in Lightwave Magazine's 2016 Innovation Review!

MPO cabling solution

Round cord with FlexMPO™ connectors

- Round cross section for any direction bending at installation
- UL1651 flammability(Plenum grade)

Fiber count	8	12	24
Fiber Diameter [mm]	0.25		
Nom. Cable Diameter [mm]	3	3	3.8
Nom. weight [kg/km]	9.0	9.0	13
Max. tensile strength [N]	100		
Min bend radius [mm]	25		



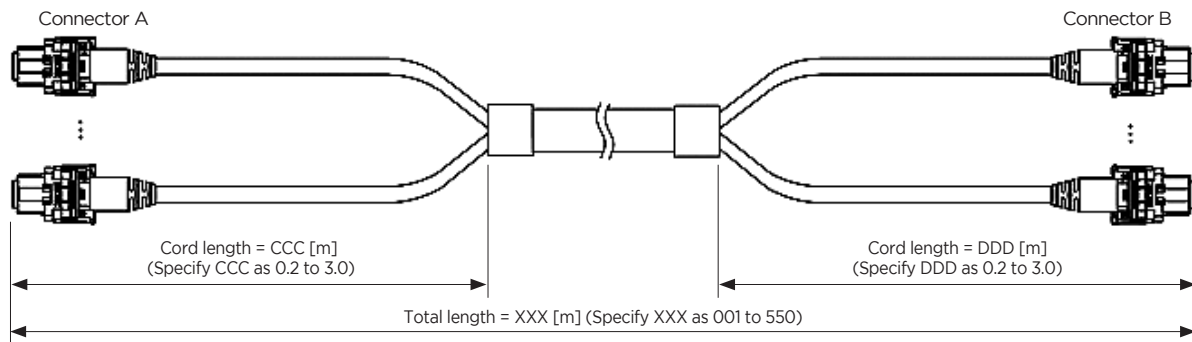
Ordering Information

Fiber Count	Fiber type	Connector A	Connector B	MPO Polarity TIA-568.3	Insertion Loss	Product Name
8	OM3 PEA10G	No pin Q8MPO	No pin Q8MPO	Type-B	Low Loss	3A008AP-VJ1VJ1ZZZB-XXXM
	OM4 PEA10G+			Type-B		4A008AP-VJ1VJ1ZZZB-XXXM
12	OS2 PAPB	No pin 12MPO	No pin 12MPO	Type-A		2A012LP-VD1VD1ZZZA-XXXM
	OM3 PEA10G			Type-A		3A012AP-VD1VD1ZZZA-XXXM
				Type-B		3A012AP-VD1VD1ZZZB-XXXM
	OM4 PEA10G+			Type-A		4A012AP-VD1VD1ZZZA-XXXM
24	OS2 PAPB	No Pin 24MPO	No Pin 24MPO	Type-B		4A012AP-VD1VD1ZZZB-XXXM
				Type-A		2A024LP-VD1VD1ZZZA-XXXM
	OM3 PEA10G			Type-A		3A024AP-VD1VD1ZZZA-XXXM
				Type-A		4A024AP-VD1VD1ZZZA-XXXM

Trunk cable with FlexMPO™ connectors

- Optical cables with enhanced mechanical strength for backbone cabling and horizontal cabling

Fiber count	8	12	24	24	48
Fiber count per sub unit	8	12	12	24	12
Fiber Diameter [mm]	0.25				
Nom. Cable Diameter [mm]	5.5	5.5	10	6.5	10
Nom. weight [kg/km]	40	40	85	50	85
Max. tensile strength [N]	660	660	660	660	660
Min bend radius [mm]	55	55	100	65	100



Ordering Information

Fiber Count	Fiber count per sub	Fiber type	Connector A	Connector B	MPO Polarity TIA-568.3	Insertion Loss	Product Name
8	8	OM3 PEA10G	No pin Q8MPO	No pin Q8MPO	Type-B	Low Loss	3C008AJ-VJ1-CCC-VJ1-DDDB-XXXM
		OM4 PEA10G+			Type-B		4C008AJ-VJ1-CCC-VJ1-DDDB-XXXM
12	12	OS2 PAPB	No pin 12MPO	No pin 12MPO	Type-A		2C012LJ-VD1-CCC-VD1-DDDA-XXXM
		OM3 PEA10G			Type-A		3C012AJ-VD1-CCC-VD1-DDDA-XXXM
					Type-B		3C012AJ-VD1-CCC-VD1-DDDB-XXXM
		OM4 PEA10G+			Type-A		4C012AJ-VD1-CCC-VD1-DDDA-XXXM
24	12	OM3 PEA10G	No pin 12MPOx2	No pin 12MPOx2	Type-B		4C012AJ-VD1-CCC-VD1-DDDB-XXXM
		OS2 PAPB			Type-A		3C024AJ-VD1-CCC-VD1-DDDB-XXXM
	24	OM3 PEA10G	No pin 24MPO	No pin 24MPO	Type-A		2D024LJ-VD1-CCC-VD1-DDDA-XXXM
		OM4 PEA10G+			Type-A		3D024AJ-VD1-CCC-VD1-DDDA-XXXM
48	12	OM3 PEA10G	No pin 12MPOx4	No pin 12MPOx4	Type-A		4D024AJ-VD1-CCC-VD1-DDDA-XXXM
		OM3 PEA10G			Type-A		3C048AJ-VD1-CCC-VD1-DDDA-XXXM