

## FC ADAPTER

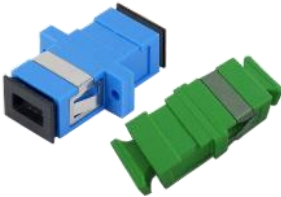


FC Square



FC Round D-Type

## SC ADAPTER



SC Simplex



SC Duplex

## MT-RJ & MPO ADAPTER



MT-RJ



MPO

## DESCRIPTION

Optical Fiber Adapter is used to mate two connectors, usually mounted in a distribution panel or wall mount box. It is a precision components made from zirconia ceramic to ensure the perfect alignment of connectors and reduced insertion loss for both SM and MM fibers. In most cases, the split sleeve is the critical part of the system that aligns the ferrule part of the connector, keeping the fibers in perfect alignment.

In the case of MT-RJ, the alignment is carried out by two guide pins fitted into one of the connectors. The adapter is purely to support and lock the connectors together in the distribution panel or wall box.

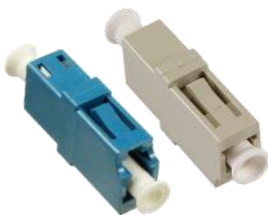
## FEATURES

- Available in FC, SC, ST, LC, MU, MT-RJ and MPO
- Available in simplex, duplex, quad (LC) and Hybrid versions
- High precision zirconia or standard phosphor bronze sleeves
- Low insertion loss
- High repeatability and stability

APPROVED BY



## LC & MU ADAPTER



LC Simplex



LC Duplex



LC Duplex with SC



MU Adapter

## ST & SMA ADAPTER



ST Adapter



SMA Adapter

## HYBRID ADAPTER



LC/SC



SC/ST



SC/FC



FC/ST

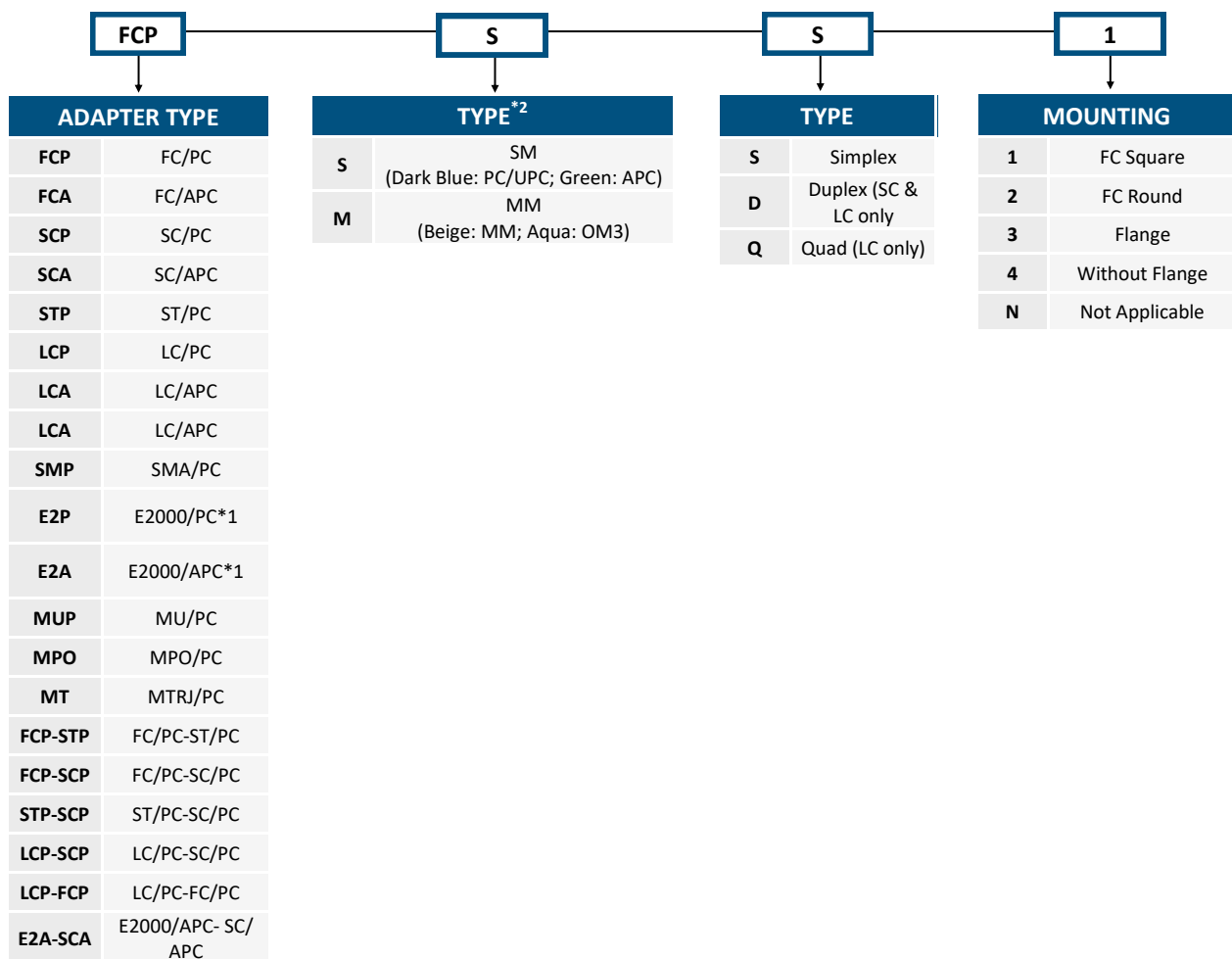
Note : Specifications are subject to change without notice

## SPECIFICATIONS

Characteristic	Parameter
End face	PC/APC
Mode	Single Mode or Multi Mode
Sleeve Material	Zirconia Ceramic or Phosphor Bronze
Adapter Housing	Polymeric plastic tested in accordance to IEC60068-2-10 and in compliance with UL94 V-0 Rating Corrosive resistant nickel plated brass material for metal parts
Insert Loss	≤ 0.2 dB
Exchangeability	≤ 0.2 dB (connect randomly)
Tensile Strength	≤ 0.2 dB (0 ~ 100N)
Lifetime	>500 times mating (in accordance to IEC 61300-2) Adapter lifetime >15 years
Vibration	≤ 0.2 dB (5 ~ 50Hz, 1.5mm Amplitude)
Working Temperature	≤ 0.2 dB (-40 ~ 80C, 21 Cycles)

## ORDERING INFORMATION

Example : FDP-SSC1



**Note :**

\*1: E2000 connectors are from R&M

\*2: Color is only applicable to polymeric material based connector's

Note : Specifications are subject to change without notice

Rev No : K-01 25  
Printed Date : 13/12/2023