



**OLE™
Enabled**



FEATURES

- 7 inch outdoor LCD touch screen
- Dynamic range from 26dB to 50dB with a minimal deadzone of 0.8m/3m.
- Live PON Network Testing (1625/1650nm)
- Optimized PON Testing: Capable of passing through a 1x128 splitter, with a minimum splitter distance of 30 meters.
- Up to 256000 sampling points, with a minimum sampling accuracy of 4cm
- Optical Link Explorer™ (OLE™) is used enabled to simplify analyzing
- OLE™ & OTDR Trace Toggle function
- Built-in Reporting: Generates PDF reports for OTDR trace and OLE testing.
- Remote Control: Allows control via PC software Via Lan Port
- Features a multifunctional, smart, and rugged design.
- PRO Version Extras: Includes Bluetooth and a mobile app

MAINFRAME SPECIFICATIONS

Dimension (mm)	253 x 168 x 73.5
Weight (kg)	1.5kg (with battery)
Display	7 inch touch screen TFT-LCD
Interface	1 x RJ45 port, 3 x USB port(USB2.0,Type A USB x 2, Type B USB x 1)
Power Supply	10V(dc)/4A, 100V(ac) to 240V(ac), 50~60Hz
Battery	7.4V/5.2Ah lithium battery
Power Saving	Backlight off: Disable/1 to 99minutes Auto shutdown: Disable/1 to 99minutes
Data Storage	Internal memory: 4GB (about 40,000 of OTDR Trace)
Language	User selectable (English, traditional Chinese, French, Korean, Russian, Spanish, Portuguese, Turkish, Italian, German, Thai, Hungarian, Czech, Vietnamese, Polish)
Environmental Conditions	Working temperature : -10°C~+50°C, ≤95% Storage temperature: -20°C~+70°C, ≤95% Humidity : ≤95% (No-condensation)

OPTICAL SPECIFICATIONS

Pulse Width	3ns, 5ns, 10ns, 30ns, 50ns, 100ns, 275ns, 500ns, 1us, 2us, 5us, 10us, 20us
Distance Range	500m, 2km, 5km, 10km, 20km, 33km, 40km, 80km, 120km, 160km, 265km
Sampling Resolution	0.05m
Sampling Point	Maximum 256,000 points
Linearity	≤0.05dB/dB
Loss Threshold	0.01dB
Loss Resolution	0.001dB
Distance Resolution	0.01m
Distance Accuracy	±(0.75m+test distance x 3 x 10-5+sampling resolution) (excluding IOR uncertainty)
Reflectance Accuracy	Single mode: ±2dB, multi mode: ±4dB
IOR Setting	1.2000~1.7000, 0.0001 step

Note : Specifications are subject to change without notice

AVAILABLE MODEL BY WAVELENGTH/DYNAMIC RANGE

Model	Wavelength	Dynamic Range	Dead-zone
PH500-D26	1310/1550nm±20nm	26/24dB	1/4m
PH500-D35		35/33dB	1/4m
PH500-D40		40/38dB	0.8/3m
PH500-D43		43/41dB	0.8/3m
PH500-D45		45/43dB	0.8/3m
PH500-T35F	1310/1550/1625nm±20nm	35/33/33dB	1/4m
PH500-T40F		40/38/38dB	0.8/3m
PH500-T43F		43/41/41dB	0.8/3m
PH500-T45F		45/43/43dB	0.8/3m
PH500-M21	850/1300nm±20nm	19/21dB	1/4m
PH500-MD21	850/1300nm±20nm	19/21dB	1/4m
	1310/1550nm±20nm	35/33dB	1/4m
PH500-MD22	850/1300nm±20nm	19/21dB	1/4m
	1310/1550nm±20nm	40/38dB	0.8/3m

Visual Fault Locator Module

Working Wavelength	650nm±20nm
Power	10mw, CLASSIII B Laser
Launching Mode	CW/2Hz
Connector	Universal 2.5mm

Optical Power Meter Module

Wavelength Range	800~1700nm
Calibrated Wavelength	850/1300/1310/1490/1550/1625/1650nm
Test Range	TypeA:-60~+5dBm(standard); Type B: -40~+23dBm(optional)
Accuracy	±0.35dB
Resolution	0.01dB

Optical Laser Source Module

Working Wavelength	Same as OTDR
Output Power	≥-10dBm
Output Accuracy	±0.5dB
Output Mode	CW/270Hz/1kHz/2kHz

OTHER FUNCTIONS

- Multi-language OTDR/OLE™ PDF report generation
- Live PON Network Testing (1625/1650nm)
- Dual wavelength (1310nm/1550nm) macro bending analysis
- Bidirectional test analysis
- Overlay and compare up to 8 traces
- Pass/Fail results with thresholds
- PC analysis software "OTDRviewer"
- Remote control via RJ45 cable
- Bluetooth and Android app available in PRO version
- OTDR trace and OLE™ conversion
- Launch and Receive Fiber Configuration

Note : Specifications are subject to change without notice

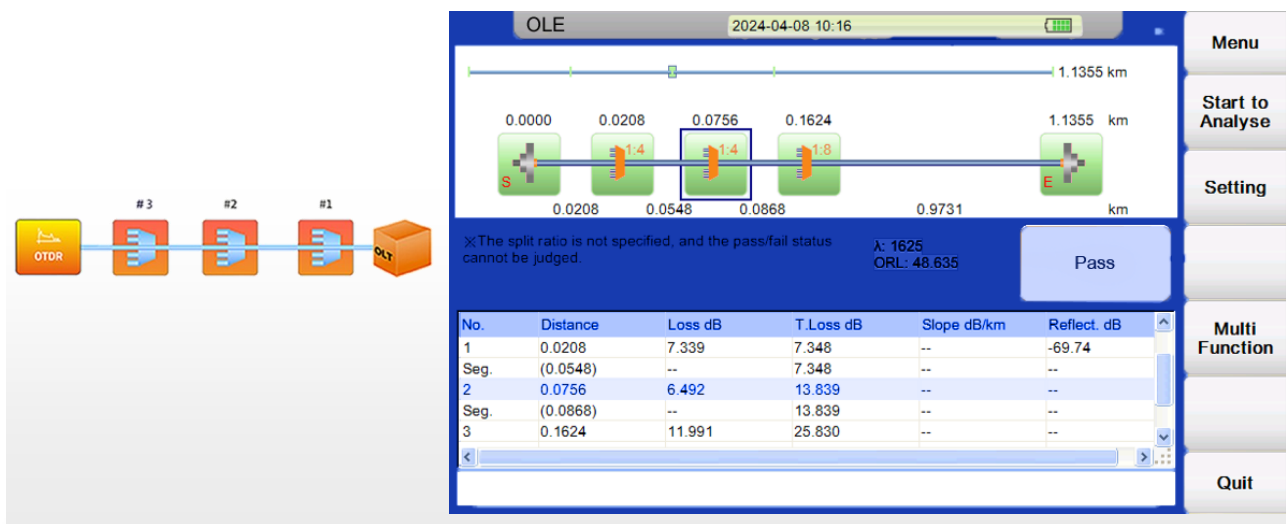
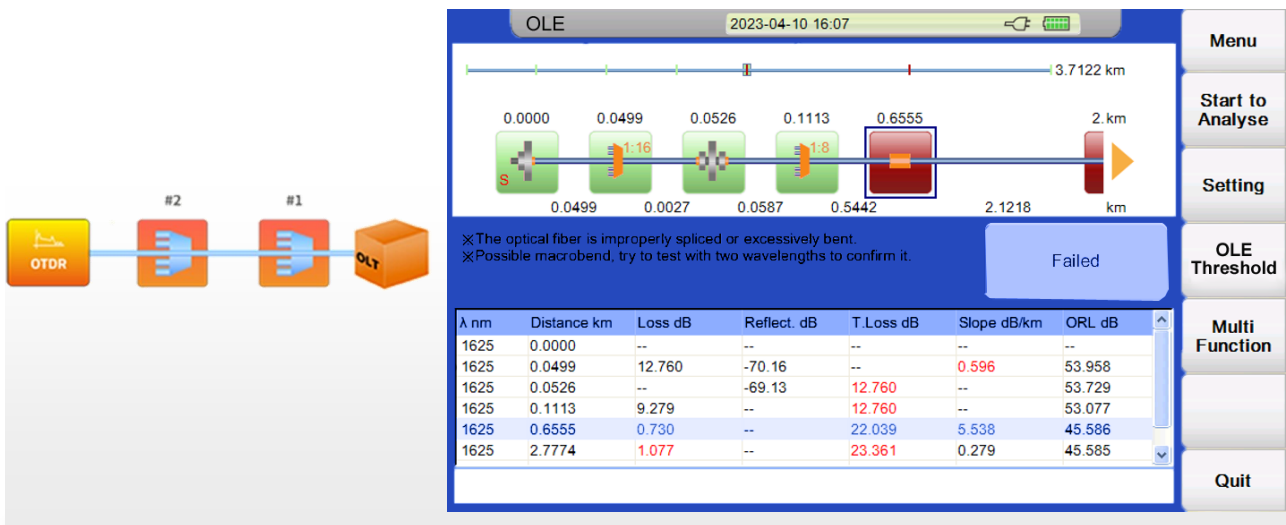
OPTICAL LINK EXPLORER™ (OLE™)

The OLE™ Test was developed using multiple pulse width acquisitions and advanced algorithms to characterize the fiber-under-test and display the events using iconic symbols.

- Adaptive Pulse Width Testing**
 Automatically adjusts pulse widths based on the link and analyzes results.
- One-Button Operation**
- Icon-Based Results**
 Results are displayed through clear icons, no curve analysis required.
- Fiber Optic Fault Diagnosis**
 Provides thorough fault detection and analysis.
- Custom Pass/Fail Settings**
 Allows user-defined criteria and generates automatic OLE reports.
- PON Network Compatible**
 Works with PON networks and can handle up to 1x128 splitters.
- Efficient Splitter Detection**
 Identifies splitters with a minimum distance of 30 meters.

Excellent OLE™ Testing for any PON Fiber Link

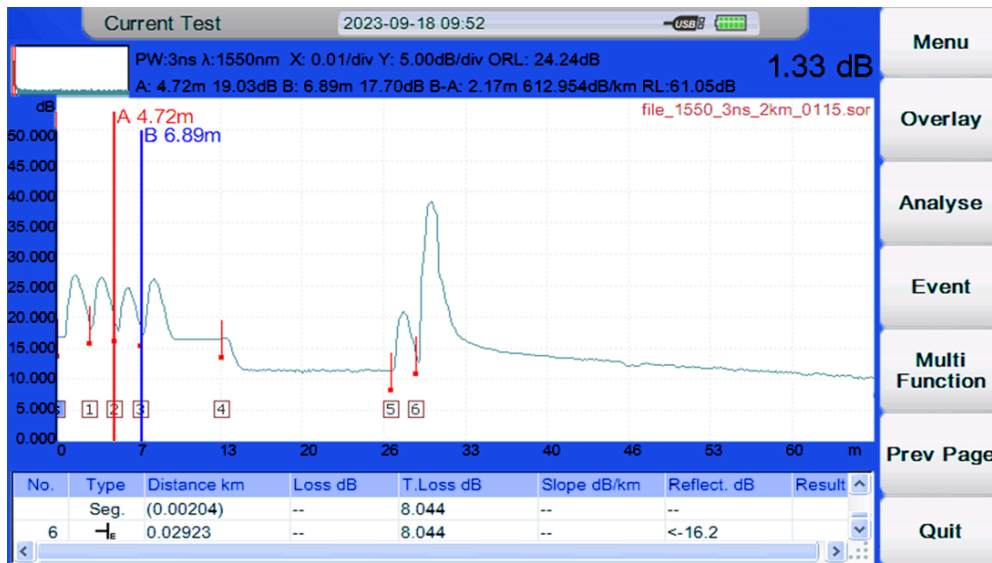
OLE™ uses multiple pulse width test modes, allowing users to automatically perform tests without complex settings and obtain the most accurate and intuitive results



Note : Specifications are subject to change without notice

Ultra Short Dead-zone 0.8m/3m

Easily detects 2-meter patch cords and fiber attenuation within 10 meters.



Optimized PON Testing ability

PH500 PON series(T40F/T43F/T45F) can pass through 1x128 splitter. With enough dynamics range and small PON deadzone to accurately describe the overall structure of PON network.



Note : Specifications are subject to change without notice

STANDARD ACCESSORIES



ORDERING INFORMATION

Part No	Description
PH500-D26SFCUPNTOPM-A	PH500 Series OTDR, 1310/1550nm (26/24dB), VFL, FC/UPC, LS, Touch Screen, Waterproof, OPM A, OLE
PH500-D35SFCUPNTOPM-A	PH500 Series OTDR, 1310/1550nm (35/33dB), VFL, FC/UPC, LS, Touch Screen, Waterproof, OPM A, OLE
PH500-D40SFCUPNTOPM-A	PH500 Series OTDR, 1310/1550nm (40/38dB), VFL, FC/UPC, LS, Touch Screen, Waterproof, OPM A, OLE
PH500-D43SFCUPNTOPM-A	PH500 Series OTDR, 1310/1550nm (43/41dB), VFL, FC/UPC, LS, Touch Screen, Waterproof, OPM A, OLE
PH500-D45SFCUPNTOPM-A	PH500 Series OTDR, 1310/1550nm (45/43dB), VFL, FC/UPC, LS, Touch Screen, Waterproof, OPM A, OLE
PH500-T35FSFCUPNTOPM-A	PH500 Series OTDR, 1310/1550/1625nm (35/33/33dB), VFL, FC/UPC, LS, Touch Screen, Waterproof, OPM A, OLE
PH500-T40FSFCUPNTOPM-A	PH500 Series OTDR, 1310/1550/1625nm (40/38/38dB), VFL, FC/UPC, LS, Touch Screen, Waterproof, OPM A, OLE
PH500-T43FSFCUPNTOPM-A	PH500 Series OTDR, 1310/1550/1625nm (43/41/41dB), VFL, FC/UPC, LS, Touch Screen, Waterproof, OPM A, OLE
PH500-T45FSFCUPNTOPM-A	PH500 Series OTDR, 1310/1550/1625nm (45/43/43dB), VFL, FC/UPC, LS, Touch Screen, Waterproof, OPM A, OLE
PH500-M21SFCUPNTOPM-A	PH500 Series OTDR, 850/1300nm (19/21dB), VFL, FC/UPC, LS, Touch Screen, Waterproof, OPM A, OLE
PH500-MD21SFCUPNTOPM-A	PH500 Series OTDR, 850/1300/1310/1550nm (19/21/35/33dB), VFL, FC/UPC, LS, Touch Screen, Waterproof, OPM A, OLE
PH500-MD22SFCUPNTOPM-A	PH500 Series OTDR, 850/1300/1310/1550nm (19/21/40/38dB), VFL, FC/UPC, LS, Touch Screen, Waterproof, OPM A, OLE