



DESCRIPTION

OLTS Series Optical Loss Test Set combines an optical power meter with a dual or triple-wavelength light source to measure the optical loss, optical return loss (optional) and fiber distance for optical fiber network installation and maintenance of optical loss and optical return loss.

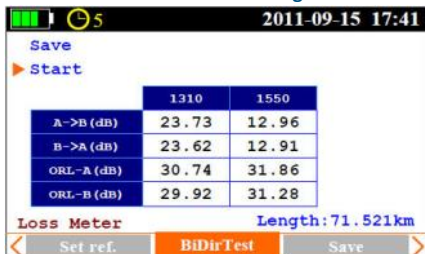
The optical power meter unit can automatically recognize the wavelength being launched and can perform an automatic bidirectional loss test on single fiber with pass/fail assessment. With its large data storage capacity, it is very convenient for field testing to store the test results and transfer the data to a computer via USB interface.

OLTS Series Optical Loss Test Set is the ideal optical loss tester to evaluate the optical fiber link IL & ORL in FTTx, LAN and CATV network

FEATURES

- All-in-one test: Bidirectional IL + ORL
- Optical power monitoring (auto power trace)
- Auto synchronization of wavelength between light source and power meter (AutoID)
- ORL test option
- LCD backlight (to ease the reading under the sun)
- Support both CW and modulated signals
- Auto power off
- USB power charging and interface to PC for data transfer
- Data storage up to 1000 results
- Interchangeable connectors available for both power meter and laser
- Pass/Fail Threshold Setting
- Loopback and side by side reference setting
- User is allowed to enable or disable length measuring, as well as input the fiber length
- Test data with date/time stamp
- Auto test records saved in local unit/remote unit/both units
- >35hrs continuous operation
- Quick startup time, no warm-up
- High resolution color LCD
- Handheld, lightweight and easy-to-use

Automatic Bidirectional Loss and Return Loss Test on Single Fiber



Optical Power Monitoring



Automatic Wavelength Switch /Identification



Bidirectional loss test can be performed by just pressing one button to automatically measure and display the entire fiber insertion loss and return loss to help users acquire complete and accurate optical link loss information

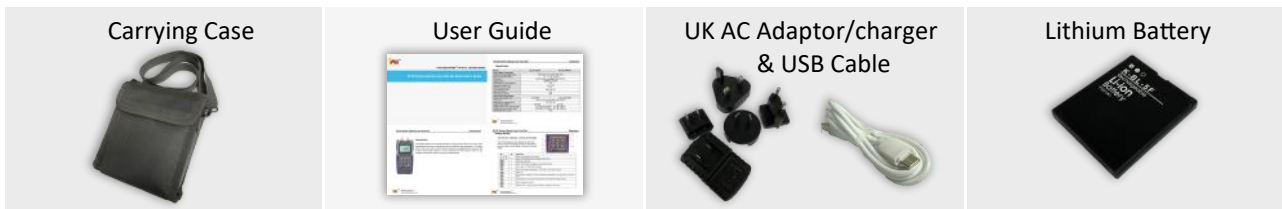
Sample Report

Fiber ID	WaveLength (nm)	LossAB (dB)	REF AB (dBm)	Loss BA (dB)	REF BA (dBm)	AVG L (dB)	ORLAB (dB)	ORL BA (dB)	Length (km)
TEST001	1310 Up/Down	22.16	-3.78	21.84	-3.87	22.00	45.00	37.70	3.177
	1490 Up/Down	20.56	-3.54	20.49	-3.63	20.52	46.86	38.90	
	1550 Up/Down	20.35	-3.94	20.21	-3.64	20.28	47.43	39.71	
(12/04/2022 14:56:08 AM)									
TEST002	1310 Up/Down	22.18	-3.78	21.83	-3.87	22.01	45.01	37.68	3.177
	1490 Up/Down	20.59	-3.54	20.47	-3.63	20.53	46.90	38.89	
	1550 Up/Down	20.29	-3.94	20.19	-3.64	20.24	47.41	39.70	
(12/04/2022 14:56:26 AM)									

SPECIFICATIONS

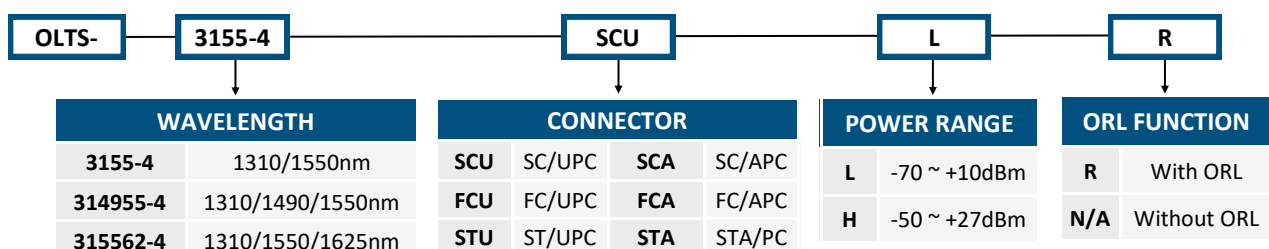
Model	OLTS-3155-4	OLTS-314955-4	OLTS-315562-4
Stabilized Laser Source			
Wavelength (±20nm), nm	1310/1550	1310/1490/1550	1310/1550/1625
Spectral Width (nm)		≤5	
Emitter Type		FP LD	
Output Power (dBm)		>-4	
Power Stability		±0.05dB/15min; ±0.10dB/8hr	
Modulation Mode		CW, 270Hz, 1KHz, 2KHz	
Optical Power Meter			
Calibrated Wavelength (nm)		850, 1300, 1310, 1490, 1550, 1625	
Measurement Range (dBm)		-70 ~ +10 (-60 ~ +10@850nm)	
Display Unit		W/mW/μW/nW/pW/dBm/dB (REF)	
Detector Type		InGaAs	
Accuracy		± 5% ± 0.01nW (±0.5 dB@850nm) for -70 ~ +10 ± 5% ± 1nW (±0.5 dB@850nm) for -50 ~ +27	
Resolution (dB)		0.01	
Auto Wavelength Identification		Yes	
Tone Detection (Hz)		270, 1K, 2K	
Optical Loss Test			
Loss Range (dB)		50 (1550nm, 200km)	
Loss Accuracy (dB)		±0.25	
Loss Test Time (s)		< 2 per wavelength	
ORL Test (Optional)			
ORL Measurement Range (dB)		0~60 (APC connector)	
ORL Accuracy (dB)		±0.75@(0~50dB), ±1.5@(50~60dB)	
ORL Uncertainty (dB)		±0.5@20dB	
General Specifications			
Connector		SC (Interchangeable FC, ST)	
Data Storage		1000 records	
Data Transfer Interface		USB	
Backlight Display		Yes	
Auto Off		Yes (Auto-off after 5 minutes idle)	
Power Supply		Lithium Battery/AC Adapter	
Battery Life, hrs		Continuous Operation ≥35	
Operating Temperature (°C)		-20 ~ 50	
Storage Temperature (°C)		-40 ~ 70	
Relative Humidity (%)		0 ~ 95 (Non-condensing)	
Weight (g)		350	
Dimensions (H × W × T) (mm)		177 × 80 × 44	

STANDARD ACCESSORIES



ORDERING INFORMATION

Example : OLTS-3155-4-SCU-L-R



Note : Specifications are subject to change without notice