



DESCRIPTION

KABEX® Optical Distribution Frame (ODF) is a high-capacity, high-density fiber distribution frame, suitable for the composition and distribution of fibers in optical access network to achieve fiber optic lines connection, distribution and scheduling.

FEATURES

- The frame, mounting bracket and metallic arts are made of top quality corrosive resistive mild steel and powder coated with grey color RAL 7035
- The frame, mounting bracket and metallic parts are made of top quality corrosive resistive mild steel and powder coated with grey color RAL 7035.
- It can lasts more than 30 years for indoor applications.
- Full front operation which can be installed against wall, side by side or back to back.
- Complete cable routing design of fiber management guides with fiber bend radius over 30mm.
- Cable inlets and outlets available on top and at the bottom.
- Standard compliance mechanical design including basic dimension, mounting bracket, front panels, sub-racks and chassis for standard 19" installation.
- Suitable for ribbon and non-ribbon optical fibers, and inserting installation of SC, FC, LC, ST (additional flange) adaptors.
- Come with lockable-common-key front door and detachable back panel.
- Capacity up to maximum of 1440 fibers with 3U FDUs; can be flexibly customized as required.

APPLICATIONS*2

- Communications
- Networks
- Industrial control
- Building automation

STANDARD CONFIGURATIONS

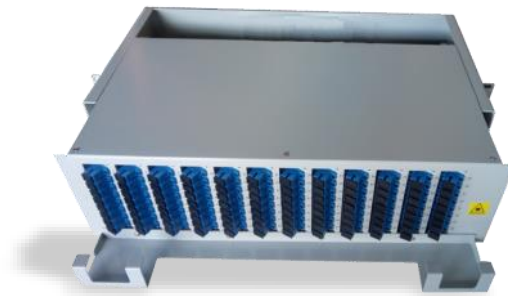
- Fiber Distribution Unit comes with :
 - Fiber Sleeves
 - Splice Trays
 - Adaptor & Pigtailes
- Fiber spooling Pillar
- Strength-core fixing panel

SPECIFICATIONS

Characteristic	Parameter
Dimension, mm*1	900W x 2200H x 300D
Capacity (no. of fibers)	Multiplication of 96C or 120C up to 1440C

Note : Specifications are subject to change without notice

DRAWER TYPE DA SERIES FDU*3



Drawer type, simplex SC, 96 or 120 fiber termination , 3U, with extended table for fiber guides

Note :

*1: The dimension of the ODF is designed in accordance with ETS 300 119-2.

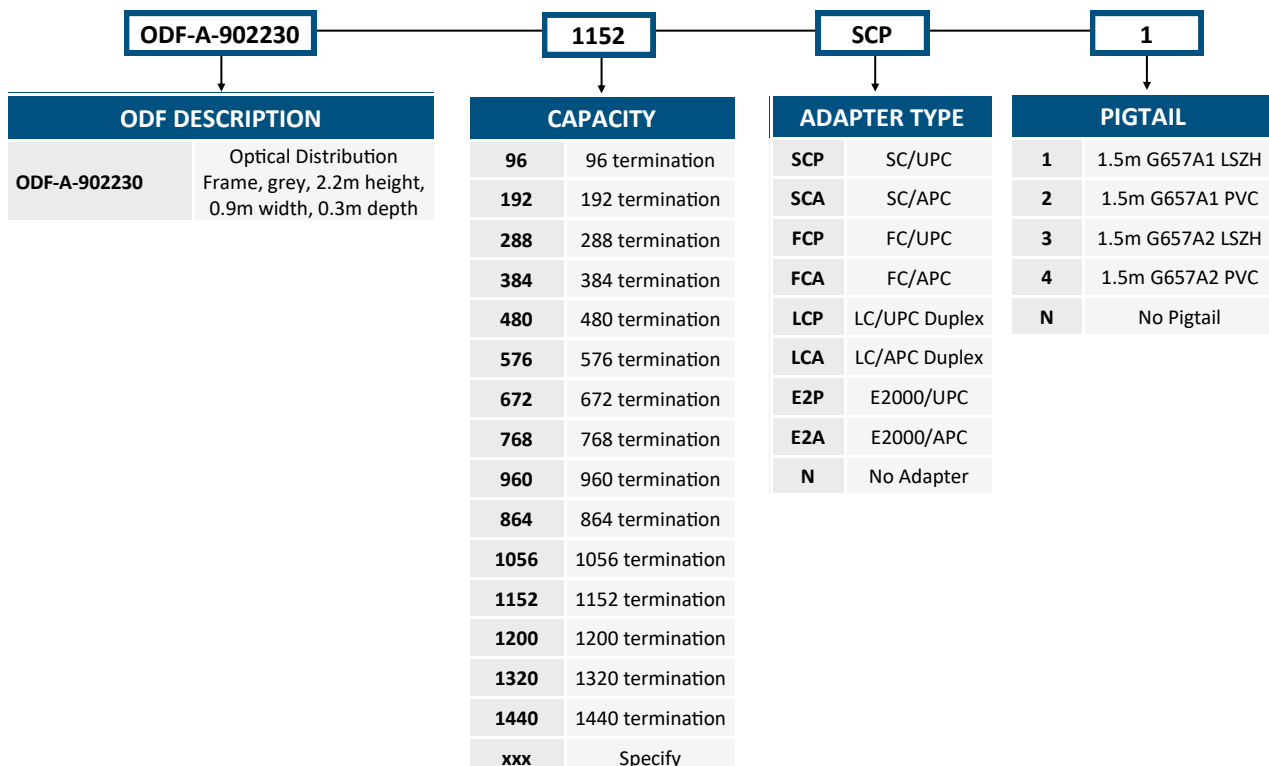
*2: The ODF and associated accessories are meant for indoor application

*3: The FDU is complete with splice trays, molded splice holders, splice protection sleeves and connector pigtails, and adapters mounted on patch panels

GENERAL SPECIFICATIONS	
Adapters (Angled @ 300)	SC, FC, LC Duplex, E2000
Capacity	96 or 120 fibers (SC) with numbering label for easy identification of port
Material	Corrosive resistive cold rolled steel (1.5mm; other thickness upon request)
Color	Powder coated (grey)
Dimension	482.6x265x131mm, 3U
Installation Method	19" rack mount
Splice Tray Capacity	24 fibers / tray (with ABS material), up to 5pcs of splice tray for 120C
Quantity	1 pc/carton

ORDERING INFORMATION

Example : ODF-A-902230-1152SCP1



Note : Specifications are subject to change without notice